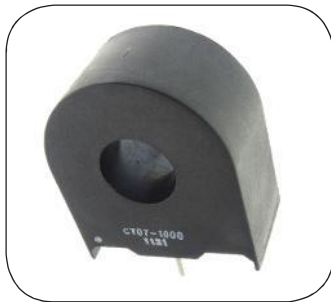


# CT07-1000 Current Sense Xfmr



## Features

- Rated to 200A
- PCB Mount
- Encapsulated Construction
- 47Hz to 2.5kHz Freq. Range

## Applications

- Switching Power Supplies
- Motor Controls

## Packaging

- 60 Pcs./Tray
- 9 Trays/Box
- 540 Pcs./Box

## Terminating Resistor Options

I <sub>Pri</sub>	Terminating Resistor	E <sub>o</sub>
10	140	1.4
20	70	1.4
50	28	1.4
100	14	1.4
150	8	1.2
200	6	1.2

$$E-T = (E_o * 1/f)/2 \text{ (Bi-Polar Only)}$$

$$E_o = I_p * (R_b/Tr)$$

E<sub>o</sub> = Output V    I<sub>p</sub> = Pri. Current    Tr = Turns Ratio  
 f = frequency    R<sub>b</sub> = Term Res.

## Electrical Specifications

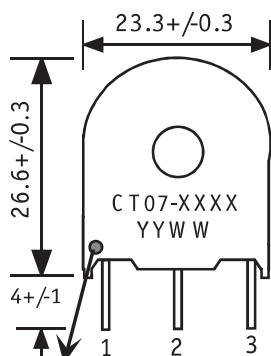
- Secondary Turns: 1,000
- Current Range: Up to 200A
- Hi-Pot: 3,750 Vac Pri:Sec (60Hz, 1mA max, 1 min)
- Operating Temp. Range: -40C to +105C
- Secondary Inductance: 8H min.
- Secondary DCR: 26 Ohms max.
- E-T Rating: 6,000 V-uSec at 100C (Bi-Polar Only)
- Electrical specifications at 25C
- Frequency Range: 47Hz to 2.5kHz

## Material Specifications

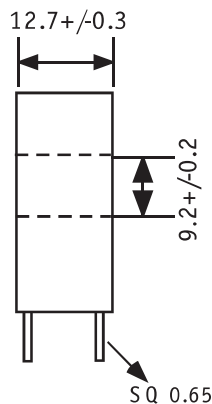
- Meets UL94V-0
- RoHS Compliant
- Material Rating: Meets requirements for UL Class A temperature rating. Ambient + Temp. Rise + Hot Spot Allowance ≤ 105C.



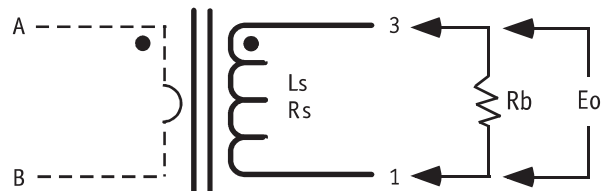
## Front View



## Side View

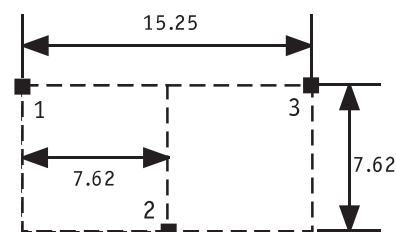


## Schematic



## Footprint

TOP VIEW



units: mm

# Mouser Electronics

Authorized Distributor

Click to View Pricing, Inventory, Delivery & Lifecycle Information:

[ICE Components:](#)

[CT07-1000](#)