

# CT08-1200 Current Sense Xfmr



## Features

- Rated up to 50A
- PCB Mount
- High Current Density
- 47Hz to 5.0kHz Freq. Range

## Applications

- Switching Power Supplies
- Motor Controls

## Packaging

- 66 Pcs./Tray
- 10 Trays/Box
- 660 Pcs./Box

## Terminating Resistor Options

I <sub>Pri</sub>	Terminating Resistor	E <sub>o</sub>
10	80	0.667
20	40	0.667
50	16	0.667

$$E-T = (E_o * 1/f)/2 \text{ (Bi-Polar Only)}$$

$$E_o = I_p * (R_b/Tr)$$

E<sub>o</sub> = Output V    I<sub>p</sub> = Pri. Current    Tr = Turns Ratio  
 f = frequency    R<sub>b</sub> = Term Res.

## Electrical Specifications

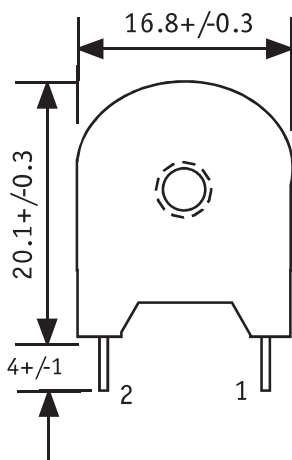
- Secondary Turns: 1,200
- Current Range: Up to 50A
- Hi-Pot: 3,750 Vac Pri:Sec (60Hz, 1mA, 1 min.)
- Operating Temp. Range: -40C to +130C
- Secondary Inductance (L<sub>s</sub>): 10H min.
- Secondary DCR (R<sub>s</sub>): 40 Ohms max.
- E-T Rating: 3,000V-uSec at 100C (Bi-Polar Only)
- Electrical specifications at 25C
- Frequency Range: 47Hz to 5.0kHz

## Material Specifications

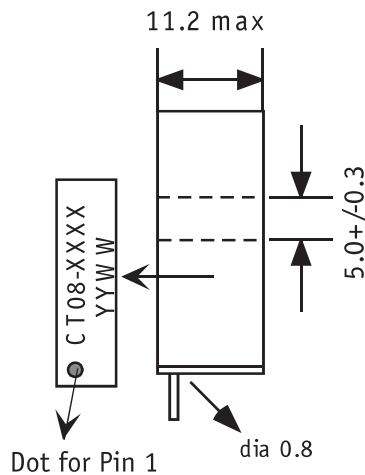
- Meets UL94V-0
- RoHS Compliant
- Material Rating: Meets requirements for UL Class B (130C) Insulation System. Ambient + Temp. Rise + Hot Spot Allowance ≤ 130C



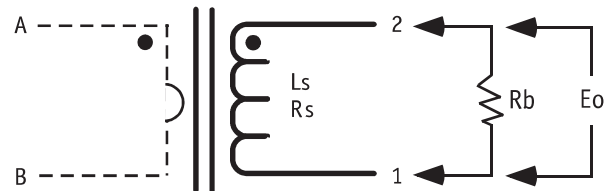
### Front View



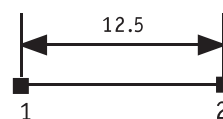
### Side View



### Schematic



### Footprint



### TOP VIEW

units: mm

# Mouser Electronics

Authorized Distributor

Click to View Pricing, Inventory, Delivery & Lifecycle Information:

[ICE Components:](#)

[CT08-1200](#)